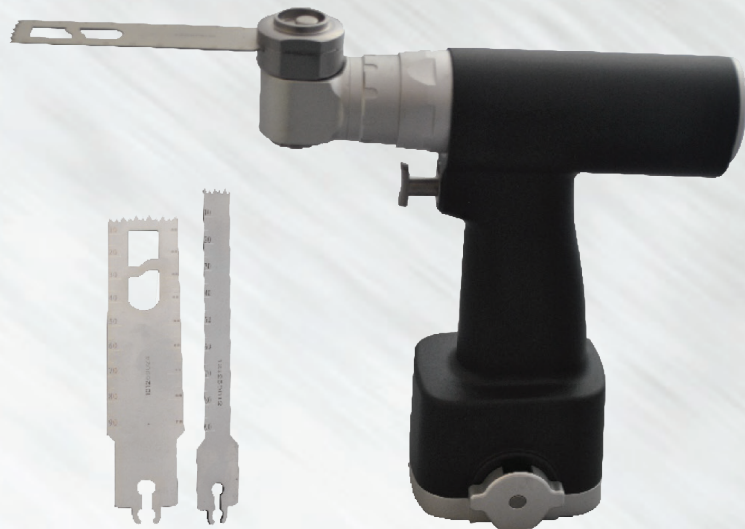
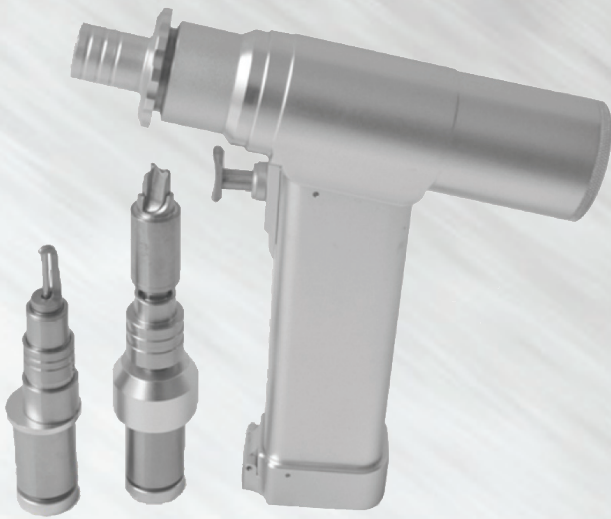




# ESD-369D

Surgical Drill and Saw serie



OPERATING THEATRE



**ESD-369D.302**

**CANNULATED DRILL MACHINE**

It is used for various types of drilling operations.  
Also Suitable for K-wire surgery & Reaming Operations

**Standard Configuration:**

- One Hand Piece
- 2 pcs. Battery
- 1 pc. Charger
- 2 pcs. Sterilizing Rings
- 1 pc. chuck & key

**SPECIFICATIONS**

|           |          |
|-----------|----------|
| Speed     | 1000 rpm |
| Noise     | ≤65db    |
| Sterilize | ≤135 °C  |
| Torque    | ≥3.5 NM  |

**Autoclavable**  
**Packed in Aluminium Carrying Case**



Battery Operated

**ESD-369D.305**

**OSCILLATING SAW**

**Standard Configuration:**

- One Hand Piece
- 2 pcs. Saw Blades
- 2 pcs. Battery
- 1 pc. Charger
- 2 pcs. Sterilizing Rings

**SPECIFICATIONS**

|           |               |
|-----------|---------------|
| Speed     | 0-20000 osc/m |
| Noise     | ≤70db         |
| Sterilize | ≤135 °C       |

**Autoclavable**  
**Packed in Aluminium Carrying Case**



Battery Operated

**STERNUM SAW**

For application in thoracic surgery.

**Standard Configuration:**

- One Hand Piece
- 2 pcs. Saw Blades
- 2 pcs. Battery
- 1 pc. Charger
- 2 pcs. Sterilizing Rings

**SPECIFICATIONS**

|           |               |
|-----------|---------------|
| Speed     | 0-15000 osc/m |
| Noise     | ≤70db         |
| Sterilize | ≤135 °C       |

**Autoclavable**  
**Packed in Aluminium Carrying Case**



**MULTIFUNCTION ORTHO DRILL & SAW SET**

**Standard Configuration:**

- Hand Piece Motor, Battery Operated
- Drill Attachment (Jacob Chuck Type)
- Cannulated Drill Attachment
- Oscillating Saw attachment
- Reamer Attachment
- Convert Adapter for AO design Reamers
- Convert Adapter for Quick Coupling Drill Bits
- 1 pc. Charger
- 2 pcs. Sterilizing Rings
- 2 pcs. Oscillating Saw Blades
- 2 pcs. Battery



**SPECIFICATIONS**

|            |                    |  |
|------------|--------------------|--|
| Hand Piece | Working Voltage    | 14.4V                                  |
|            | Output Power       | ≥90W                                   |
|            | Unit Rise in Temp. | ≤20°C                                  |
| Charger    | Input Voltage      | AC 110V-240V 50HZ-60HZ                 |
|            | Output Power       | 14.4V 900MA                            |
|            | Input Power        | 30W                                    |
| Battery    | Voltage            | 14.4V                                  |
|            | Charging Time      | 2Hours or more                         |
|            | Running Time       | Continues 45-50 minutes on full charge |

**Autoclavable**  
**Packed in Aluminium Carrying Case**





**ESD-369D.103**

**CRANIAL DRILL & BUR**

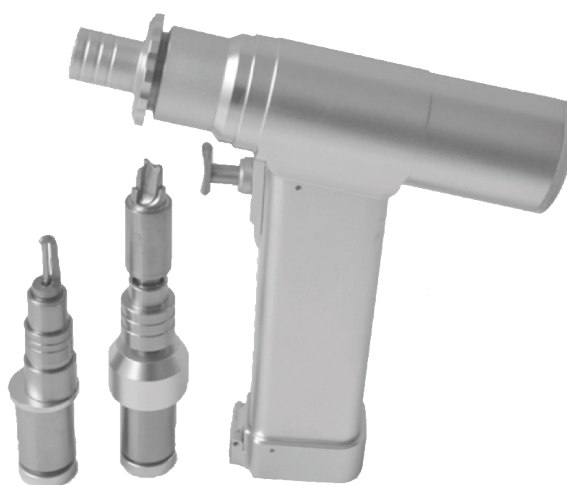
For application in cranial surgery.

**Standard Configuration:**

- 1 pc. Cranial Drill Attachment
- 1 pc. Bur Attachment
- 2 pcs. Battery
- 1 pc. Charger
- 2 pcs. Sterilizing Rings

**SPECIFICATIONS**

|               |              |
|---------------|--------------|
| Speed - Drill | 0-1000 r/m   |
| Speed - Bur   | 0-40,000 r/m |
| Noise         | ≤65db        |
| Sterilize     | ≤135 °C      |

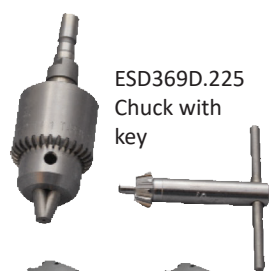


Battery Operated

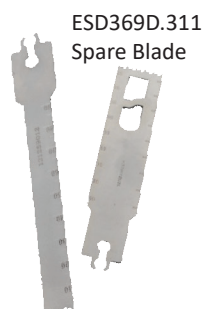
**Autoclavable**

**Packed in Aluminium Carrying Case**

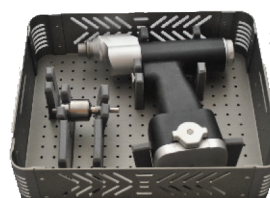
**SPARE PARTS**



ESD369D.225  
Chuck with  
key



ESD369D.311  
Spare Blade



ESD369D.314  
Sterilization Box For  
Drill Machine Set



ESD369D.216  
Quick Coupling  
Drill Bit  
Attachment



ESD369D.309  
Battery



ESD369D.310  
Battery Charger



ESD369D.219  
K Wire  
attachment



ESD369D.217  
Reamer Adapter -  
for Hexagonal  
fitting reamer



ESSE3 srl, Via Garibaldi 30  
14022 Castelnuovo D.B. (AT)  
Tel +39 011 99 27 706  
Fax +39 011 99 27 506  
e-mail [esse3@chierinet.it](mailto:esse3@chierinet.it)  
web: [www.esse3.dreamgest.com](http://www.esse3.dreamgest.com)

